

September 2022 Newsletter



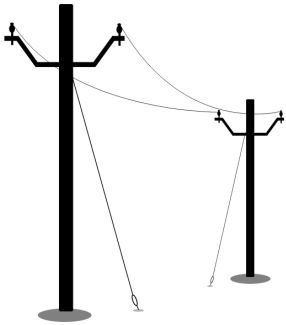
IMPORTANT DATES:

September 15th-19th– Vernon County Fair

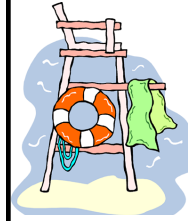
October 3rd-7th– Public Power Week

October 31st– Halloween

Help us celebrate the value of Public Power!



Visit our office the week of October 3rd-7th for Public Power Week! Sign up for a chance to win one of our great prizes, a credit on your utility bill or a gift certificate to Old Towne Inn, Westby Creamery, or Westby Rod and Gun Club.



Thank you to our Lifeguards and our

Pool Manager

Allison Weninger for a great pool season!

~~~~~  
Thank you to our Coaches, Umpires, & our

Park and Rec

Director

Jared

Anderson

for a great season!



There are easy and low-cost ways to reduce energy use on the things you use every day.

-Make sure all computers at home and at work are set to go into sleep mode when not in use.

-Install a programmable thermostat or energy management system to manage indoor temperatures automatically.

-When buying new products, choose LED light bulbs and ENERGY STAR certified appliances and electronics.

Visit our website [cityofwestby.org](http://cityofwestby.org) for more helpful tips!



**EASY PEASY  
SIMPLE CHANGES  
MEAN BIG SAVINGS**

## CITY OF WESTBY and WESTBY UTILITIES

200 N. Main Street

Westby, WI 54667

City of Westby: (608)634-3214

Westby Utilities: (608)634-3416

Fax: (608)634-3274

*Mayor: Danny Helgerson*

*Director of Public Works:*

*Ron Janzen*

*City Clerk/Treasurer: Roxy Wedwick*

*Utility Clerk: Amy Swiggum*

*Administrative Assistant: Lisa Janzen*

*Council Members:*

*Mark Hendrickson, Sue Jacobson,*

*Mark Jelinek, Ann Kurth,*

*Dan Nelson and Philip Strand*



**Watch for the return of our Crossing Guards Howard and Scott as school resumed on September 1st!**

**Best of luck to our Crossing Guards, Teachers, Parents and Students during the 2022/2023 School Year!**

# Fall Household Hazardous Clean Sweep

Saturday, September 24th 8:00am-2:00pm



Vernon County Landfill  
S3705 County Road LF  
Viroqua, WI 54665

**Household Hazardous Material ONLY!**  
No garbage/recycling drop-off at this time.

### Accepting (200 lb. limit):

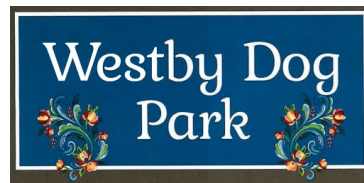
Paints & Stains, Agriculture Chemicals,  
Poisonous/Toxic Chemicals, Flammable  
Liquids & Solvents, Other Unlisted Chemicals.

*Keep in mind that some chemicals can't be mixed and should always be kept separate.*

*Deliver all material in original container if possible.*

### Not Accepted:

Prescription Drugs, Ammunition, Explosives,  
or Radioactive Materials.





The Westby Dog Park is now open  
at Syverson Park!

### Dog Park Rules:

- Use Park at your own risk.
- Owners are legally responsible for the behavior of their dog(s) at all times.
- Dogs must be leashed and gates closed while entering and exiting the park.
- Dog waste must be cleaned up by their owners immediately.
- Dog Handlers must be within the dog park and supervising their dog with leash readily available.
- Dog handlers must be at least 13 years of age.
  - Children under 13 must be accompanied by an adult.
- Aggressive dogs must be removed immediately.
  - Limit of 3 dogs per handler.
- Dog handlers are responsible for filling holes and repairing damage done by their dogs.

## October 2022

| Sunday                                                                              | Monday                                  | Tuesday                     | Wednesday                                            | Thursday                                | Friday                                                     | Saturday                                                                                    |
|-------------------------------------------------------------------------------------|-----------------------------------------|-----------------------------|------------------------------------------------------|-----------------------------------------|------------------------------------------------------------|---------------------------------------------------------------------------------------------|
|  |                                         |                             |                                                      |                                         |                                                            | 1                                                                                           |
| 2                                                                                   | 3<br>Business<br>Garbage &<br>Recycling | 4<br>South Side<br>Garbage  | 5<br>-North Side<br>Garbage<br>-South Side<br>Paper  | 6<br>Business<br>Garbage &<br>Cardboard | 7<br>South Side<br>Plastics                                | 8                                                                                           |
| 9                                                                                   | 10                                      | 11<br>South Side<br>Garbage | 12<br>-North Side<br>Garbage<br>-North Side<br>Paper | 13                                      | 14<br>North Side<br>Plastics                               | 15                                                                                          |
| 16                                                                                  | 17                                      | 18<br>South Side<br>Garbage | 19<br>North Side<br>Garbage                          | 20                                      | 21<br>South Side<br>Tin/Glass                              | 22                                                                                          |
| 23                                                                                  | 24                                      | 25<br>South Side<br>Garbage | 26<br>North Side<br>Garbage                          | 27                                      | 28<br>-North Side<br>Tin/Glass<br>-Lg. Metal/<br>Appliance | 29<br> |
| 30                                                                                  | 31                                      |                             |                                                      |                                         |                                                            |                                                                                             |